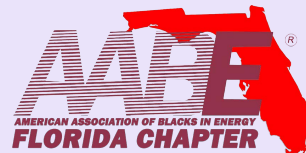


# 11TH ANNUAL ORLANDO YOUTH ENERGY ACADEMY



A TWO-DAY EVENT OF CAREER EXPLORATION THROUGH INTERACTIVE ACTIVITIES AND ENGAGING DISCUSSIONS DESIGNED TO EXPOSE YOUNG PEOPLE TO CAREERS IN ELECTRIC UTILITY INDUSTRIES AND RELATED STEM FIELDS.

**July 7th & 8th @ 8:00AM**

*Click here to register*

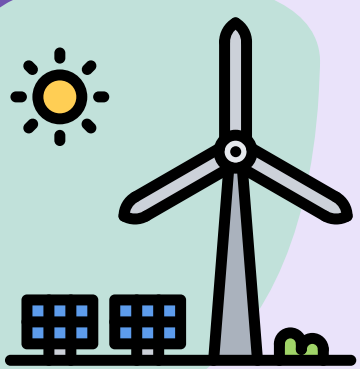
**(DAY 1) DUKE ENERGY WINTER GARDEN > 402 E. CROWN POINT RD., WINTER GARDEN, FL 34787**

**(DAY 2) SIEMENS WIND TURBINE CENTER (AM) > 7415 EMERALD DUNES DR., ORLANDO, FL 32822**

**(DAY 2) ORLANDO UTILITIES COMMISSION (OUC) (PM) > 6003 PERSHING AVE., ORLANDO, FL 32822**

## INTERACTIVE HANDS-ON ACTIVITIES

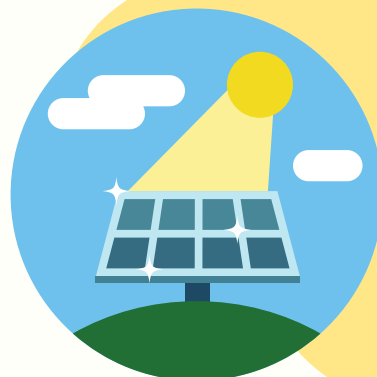
BE EMPOWERED AS YOU NAVIGATE THE ENERGY INDUSTRY WITH US



**WORKSHOPS ON “A DAY AS A LINE TECH”, ELECTRIC VEHICLES (EV), CYBERSECURITY, PANEL DISCUSSIONS WITH INDUSTRY EXPERTS, COHORT-BUILDING GAMES, AND MUCH MORE**

**ORLANDO AREA YOUTH IN GRADES 8TH - 12TH ARE INVITED TO PARTICIPATE**

REGISTRATION WILL BE ON A FIRST-COME, FIRST-SERVE BASIS.



## THE YOUTH ENERGY ACADEMY WILL DO THE FOLLOWING:

- EDUCATE AND SPARK THE INTEREST OF A DIVERSE POPULATION OF THE EMERGING WORKFORCE IN THE ENERGY ARENA.
- ALIGN EDUCATION WITH WORKFORCE NEEDS.
- ADVANCE THE IMPORTANCE OF DIVERSITY, EQUITY AND INCLUSION IN THE UTILITY INDUSTRY.



TO ENSURE YOU RECEIVE YOUR SPECIAL YEA PARTICIPANT SWAG PACKAGE, REGISTER TODAY! EARLY REGISTRANTS (BY FRIDAY, 6/24) WILL BE ENTERED INTO A SPECIAL DRAWING FOR A \$50 GIFT CARD!

- 8:30AM - 4PM each day, (Continental Breakfast 8:00AM - 8:15AM)
- Registration and permission slip required
- Continental breakfast, snacks and lunch provided
- **Bring your mobile phone to participate in various activities**
- Closed toe shoes required
- Transportation will not be provided

**GIFT CARDS & PRIZES WILL BE AWARDED THROUGHOUT THE DAY!**

CLICK THE REGISTRATION LINK ABOVE OR GO TO [YEA2022ORL.EVENTBRITE.COM](http://YEA2022ORL.EVENTBRITE.COM) **BY 7/3/2022!**

FOR MORE INFORMATION, PLEASE CONTACT:  
MELVIN PHILPOT @ 407.942.9332, MELVIN.PHILPOT@DUKE-ENERGY.COM

