

9TH ANNUAL OCALA YOUTH ENERGY ACADEMY

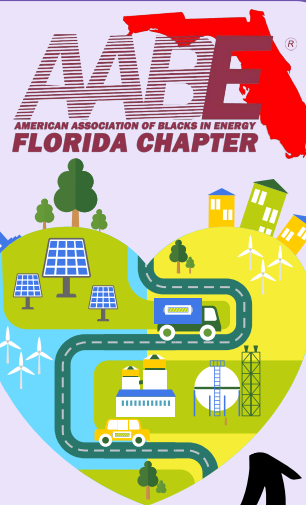
A TWO-DAY EVENT OF CAREER EXPLORATION THROUGH INTERACTIVE ACTIVITIES AND ENGAGING DISCUSSIONS DESIGNED TO EXPOSE YOUNG PEOPLE TO CAREERS IN ELECTRIC UTILITY INDUSTRIES AND RELATED STEM FIELDS.

June 22nd & 23rd @ 8:00AM

Click here to register

(DAY 1) MARY SUE RICH COMMUNITY CENTER @ REED PLACE > 1821 NW 21ST AVE., OCALA, FL 34475

(DAY 2) MARY SUE RICH COMMUNITY CENTER @ REED PLACE (TRANSPORT TO AND FROM OCALA ELECTRIC WILL BE PROVIDED FOR STUDENTS)

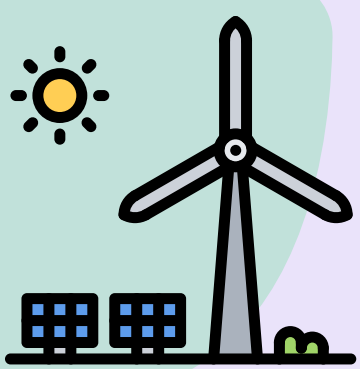


INTERACTIVE HANDS-ON ACTIVITIES

BE EMPOWERED AS YOU NAVIGATE THE ENERGY INDUSTRY WITH US

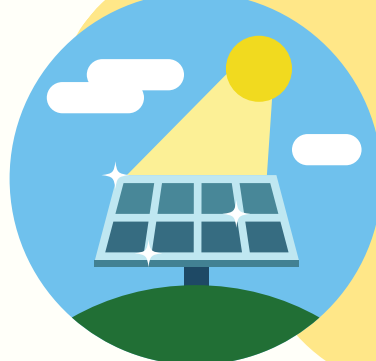


WORKSHOPS ON “A DAY AS A LINE TECH”, ELECTRIC VEHICLES (EV), CYBERSECURITY, PANEL DISCUSSIONS WITH INDUSTRY EXPERTS, COHORT-BUILDING GAMES, AND MUCH MORE



OCALA AREA YOUTH IN GRADES 8TH - 12TH ARE INVITED TO PARTICIPATE

REGISTRATION WILL BE ON A FIRST-COME, FIRST-SERVE BASIS.



THE YOUTH ENERGY ACADEMY WILL DO THE FOLLOWING:

- EDUCATE AND SPARK THE INTEREST OF A DIVERSE POPULATION OF THE EMERGING WORKFORCE IN THE ENERGY ARENA.
- ALIGN EDUCATION WITH WORKFORCE NEEDS.
- ADVANCE THE IMPORTANCE OF DIVERSITY, EQUITY AND INCLUSION IN THE UTILITY INDUSTRY.



TO ENSURE YOU RECEIVE YOUR SPECIAL YEA PARTICIPANT SWAG PACKAGE, REGISTER TODAY! EARLY REGISTRANTS (BY FRIDAY, 6/9) WILL BE ENTERED INTO A SPECIAL DRAWING FOR A \$50 GIFT CARD!

- 8:30AM - 4PM each day, (Continental Breakfast 8:00AM - 8:15AM)
- Registration and permission slip required
- Continental breakfast, snacks and lunch provided
- **Bring your mobile phone to participate in various activities**
- Closed toe shoes required

GIFT CARDS & PRIZES WILL BE AWARDED THROUGHOUT THE DAY!

CLICK THE REGISTRATION LINK ABOVE OR GO TO [YEA2023OCLA.EVENTBRITE.COM](https://yea2023ocla.eventbrite.com) **BY 6/15/2023!**

FOR MORE INFORMATION, PLEASE CONTACT:
MIKLE GORDON @ 813.525.6559, MIKLE.GORDON@DUKE-ENERGY.COM
KATHY JUDKINS @ 352.303.8470, KATHY.JUDKINS@SECOENERGY.COM
SHEREE MUNROE @ 352.694.8437, SHEREE.MUNROE@DUKE-ENERGY.COM

